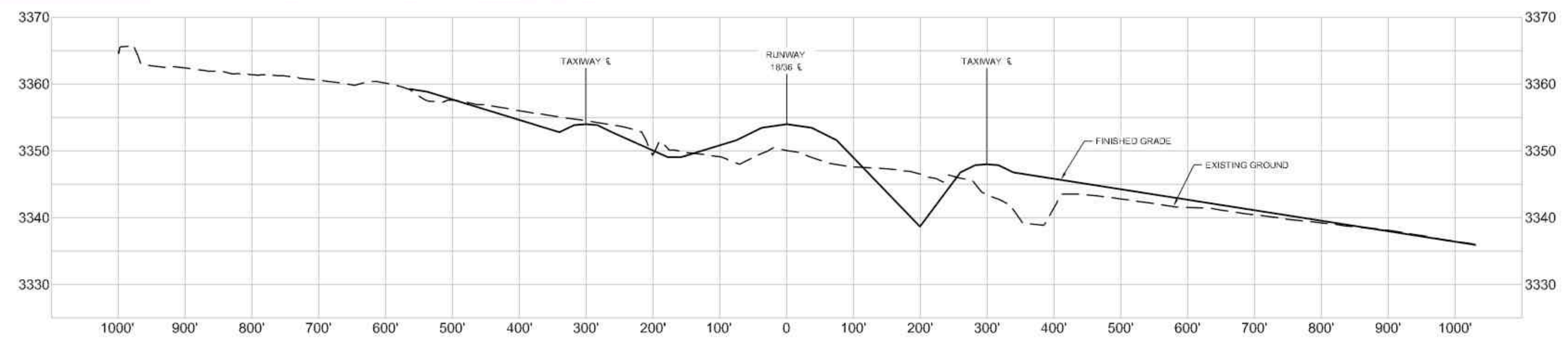


LEGEND		
EXISTING	FUTURE/ULTIMATE	DESCRIPTION
[Symbol]	[Symbol]	AIRFIELD DEVELOPMENT (ASPHALT)
[Symbol]	[Symbol]	STRUCTURE/FACILITIES (BUILDING)
[Symbol]	[Symbol]	AIRPORT PROPERTY LINE (APL)
[Symbol]	[Symbol]	RUNWAY SAFETY AREA (RSA)
[Symbol]	[Symbol]	TAXIWAY SAFETY AREA (TSA)
[Symbol]	[Symbol]	RUNWAY OBJECT FREE AREA (ROFA)
[Symbol]	[Symbol]	TAXIWAY/TAXILANE OBJECT FREE AREA (TOFA)
[Symbol]	[Symbol]	TO BE REMOVED
[Symbol]	[Symbol]	ROADS

(E) EXISTING, (F) FUTURE

- NOTE:
1. PARALLEL TAXIWAYS MUST BE LOWER THAN RUNWAY.
  2. ADD 3300 FT. TO PROPOSED SPOT ELEVATIONS.

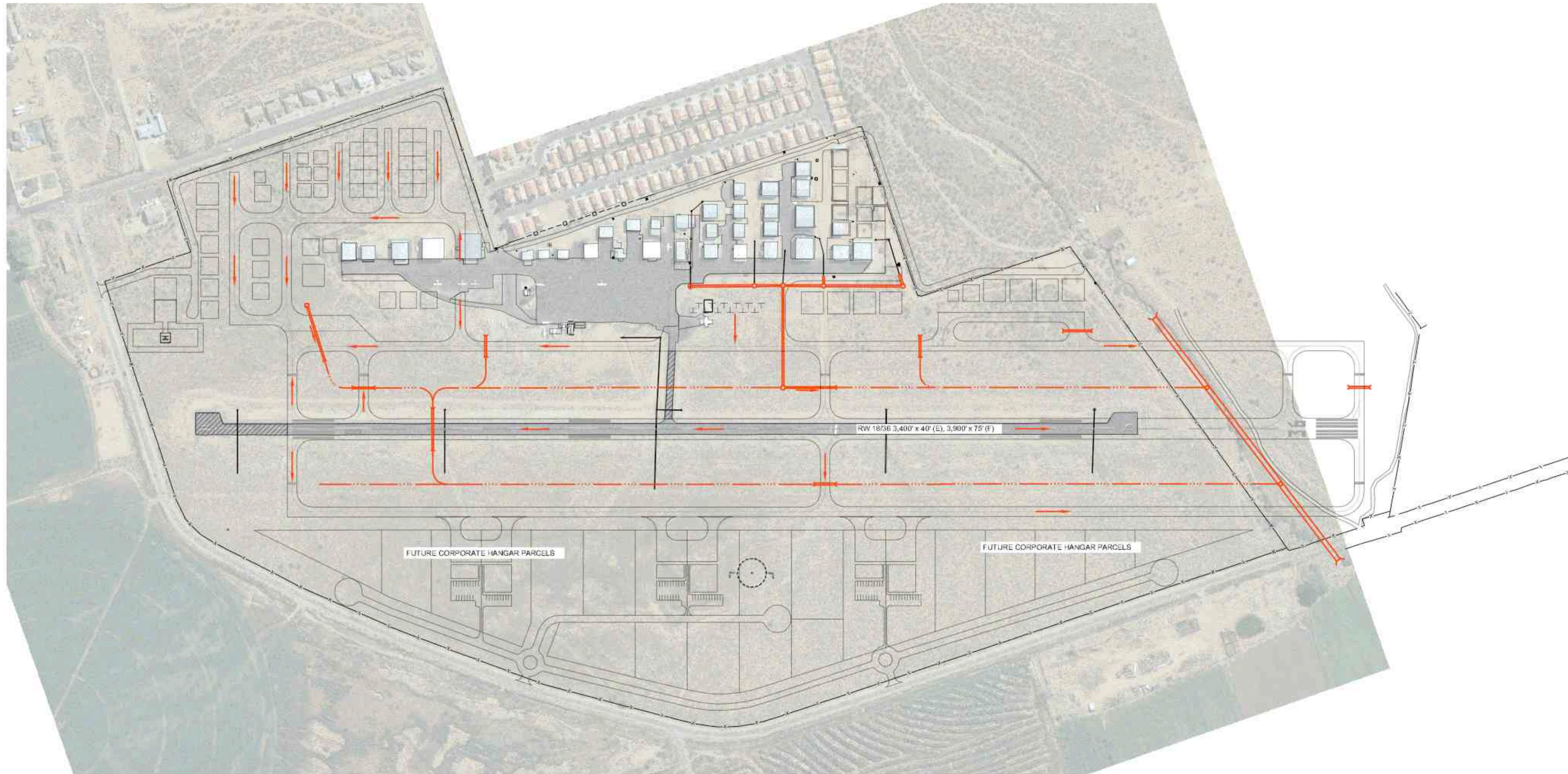


HURRICANE MUNICIPAL AIRPORT  
 HURRICANE, UTAH  
 GENERAL DICK STOUT FIELD  
 AIP No.  
 AIRPORT LAYOUT PLANS

No.	Project No.	Date	Revision / Description	File	Drawn	Checked	Approved
0	066942	09/24/09	TERMINAL AREA DRAWINGS	6942000	UKB	JLW	JEP

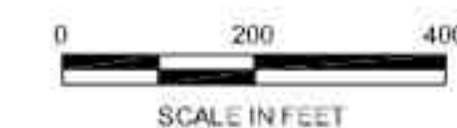
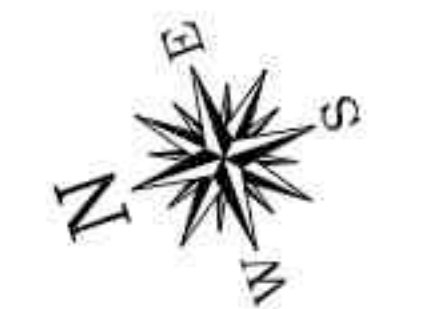
THE PREPARATION OF THIS DOCUMENT WAS FINISHED IN PART THROUGH THE AIRPORT IMPROVEMENT PROGRAM FUNDING. THE CONTRACTOR SHALL BE RESPONSIBLE FOR THE ACCURACY OF THE DATA AND THE ADAPTATION OF THE PLAN TO THE EXISTING CONDITIONS. THE CONTRACTOR SHALL BE RESPONSIBLE FOR THE ACCURACY OF THE DATA AND THE ADAPTATION OF THE PLAN TO THE EXISTING CONDITIONS. THE CONTRACTOR SHALL BE RESPONSIBLE FOR THE ACCURACY OF THE DATA AND THE ADAPTATION OF THE PLAN TO THE EXISTING CONDITIONS.

CONCEPTUAL DRAINAGE PLAN



LEGEND		
EXISTING	FUTURE	DESCRIPTION
		AIRFIELD DEVELOPMENT (ASPHALT)
		STRUCTURE/FACILITIES (BUILDING)
		TO BE REMOVED
		ROADS
		DRAINAGE FEATURE
		DRAINAGE FLOW DIRECTION

(E) EXISTING, (F) FUTURE



HURRICANE MUNICIPAL AIRPORT  
 HURRICANE, UTAH  
 GENERAL DICK STOUT FIELD  
 AIP No. \_\_\_\_\_  
 AIRPORT LAYOUT PLANS

No.	Project No.	Date	Revision / Description	File	Drawn	Checked	Approved
0	005942	09/24/09	TERMINAL AREA DRAWINGS	5942500	LKB	JLW	JSP

THE PREPARATION OF THIS DOCUMENT WAS FINANCED IN PART THROUGH THE AIRPORT REVENUE PROGRAM. THE CONTENTS DO NOT NECESSARILY REFLECT THE OPINION OF THE FAA. ACCEPTANCE OF THE PLAN BY THE DEVELOPMENT DIVISION DOES NOT INDICATE THAT THE PROPOSED DEVELOPMENT IS ENVIRONMENTALLY ACCEPTABLE OR COMPLIES WITH ALL APPLICABLE REGULATIONS.

DRAINAGE ROUTES

Sheet: \_\_\_\_\_ of: \_\_\_\_\_